

OWNER'S MANUAL



SALTFREEMAX

with IN/OUT Head

WATER  **TECH**

**ACTIVATE YOUR WARRANTY
BY REGISTERING YOUR PRODUCT AT
www.watertech.com or call 888-254-8412**

Dealer Contact and Product Information

Dealer Name: _____

Dealer Phone Number: _____ Installation Date: _____

Model Number: _____ Serial Number: _____

**PRODUCT MUST BE REGISTERED TO ACTIVATE WARRANTY
VISIT WWW.WATERTECH.COM or Call 888-254-8412**

Introduction

The SaltfreeMAX™ provides protection from scale formation throughout your home's plumbing system. The SaltfreeMAX™ can be installed at the point-of-entry to treat your entire home, both hot and cold water, or it can be located directly before a water heater or other device (e.g. steamer, etc) that requires protection from hard water.

The SaltfreeMAX™ reduces or eliminates scale formation on internal and external plumbing surfaces as well as reducing spotting and streaking normally associated with hard water.

The SaltfreeMAX™ prevents scale by transforming the normal dissolved hardness minerals into undissolved crystal micro-particles. These crystals stay suspended in the water and have a greatly reduced ability to react and attach to surfaces like dissolved hardness does. Therefore, the problem of internal buildup of scale in pipes, water heaters and on fixtures and glass is greatly reduced.

The SaltfreeMAX™ is not a water softener – Low or phosphate-free cleaning products are recommended to achieve optimum results. Modern surfactant or detergent based liquid soaps are preferred over old-fashioned caustic solid soaps.

We hope you enjoy the many benefits of the SaltfreeMAX™ as it provides your home with conditioned water.

SaltfreeMAX Benefits

- Chemical free scale prevention. Provides cost savings and environmental benefits.
- Virtually maintenance free. NO salt bags or other chemicals to buy, transport and store.
- No electricity, no wastewater, completely self-contained.
- Improves the efficiency of water-using appliances.
- Simple installation – no electrical and drain hookup.
- Safe for landscaping and lawn watering. No need for costly bypass plumbing.
- Compatible with all on-site and community wastewater treatment systems.
- Not subject to water softener restrictions and “bans”.

Notice

During the first 30-90 days: Faucet aerators and drains may plug occasionally as old scale is removed from your plumbing system and water heater. You may also see milky water while the descaling is taking place. This is simply an increase in the calcium in the water because SaltfreeMAX™ is removing old scale deposits from your pipes. The SaltfreeMAX™ media is an exhaustive media and will need to be replaced every 3-5 years based on the hardness level of the water supply.

Good Practices

If your dishwasher is severely coated with scale at the time of installation, we recommend that you purchase a product like Jet-Dry® dishwasher cleaner to accelerate the cleaning. After this initial cleaning SaltfreeMAX™ should keep it clean.

We also recommend that you drain your water heater tank. This should be done 30 to 60 days after SaltfreeMAX™ is installed, and again in one year. This is a good practice that can dramatically increase the life of your water heating appliance. The SaltfreeMAX™ will help keep the tank and heating elements free of scale and operating at peak efficiency. Please follow the manufacturer's instructions when draining the water heater tank!

Installation Tips & System Cautions

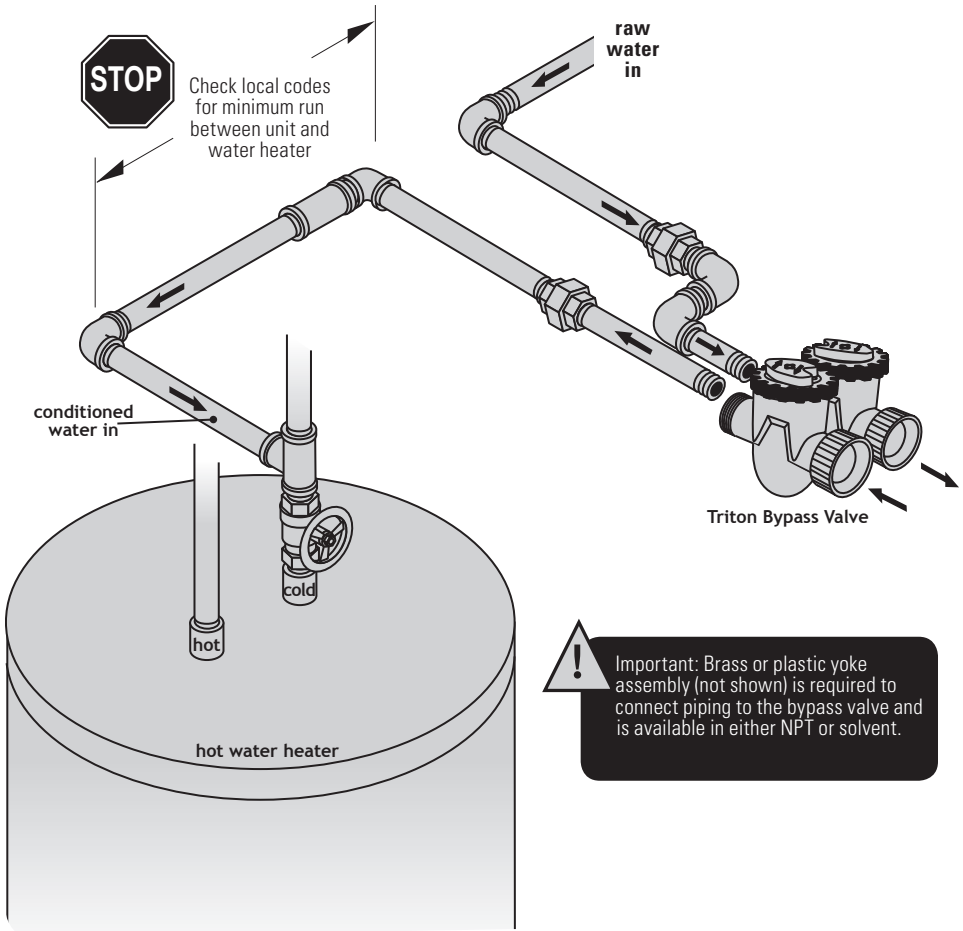
- **Note: The SaltfreeMAX™ system is installed in the UP-flow position, reverse from a water softener. You will need to re-orient the bypass valve handles per instructions on page 6.**
- The SaltfreeMAX™ can be tipped or laid on side for transportation but must be installed in vertical position. Install on a level service to allow fluidization of media. Observe all local plumbing and building codes when installing the system.
- The SaltfreeMAX™ is light and only partially filled with media – this is normal and allows the media to be fluidized in service.
- The SaltfreeMAX™ should be installed with the included bypass valve to facilitate installation and service.
- The SaltfreeMAX™ should be installed last in line if multiple treatment systems.
- Please note (below) iron, manganese and copper maximum contaminant levels for the SaltfreeMAX™. Levels that exceed these parameters will foul the SaltfreeMAX™ media. Pretreatment may be needed to bring contaminant levels into compliance.
- It is highly recommend to install a BlueMAX carbon filter before the SaltfreeMAX™ for taste and odor reduction and for extending the media life.
- Do not let the SaltfreeMAX™ freeze. Damage to tank or resin and media may result.

OPERATIONAL PARAMETERS & WATER IMPURITIES

Operating Temperature	40 - 110 Deg. F
pH Range	6.5 - 8.5
Hardness	Up to 25 grains/gal.
Chlorine	< 3 ppm
Iron	< .2 ppm
Manganese	< .05 ppm
Copper	< 1.3 ppm
Hydrogen Sulfide	none allowed
Oil	none allowed
Phosphates	none allowed

Plumbing Connection

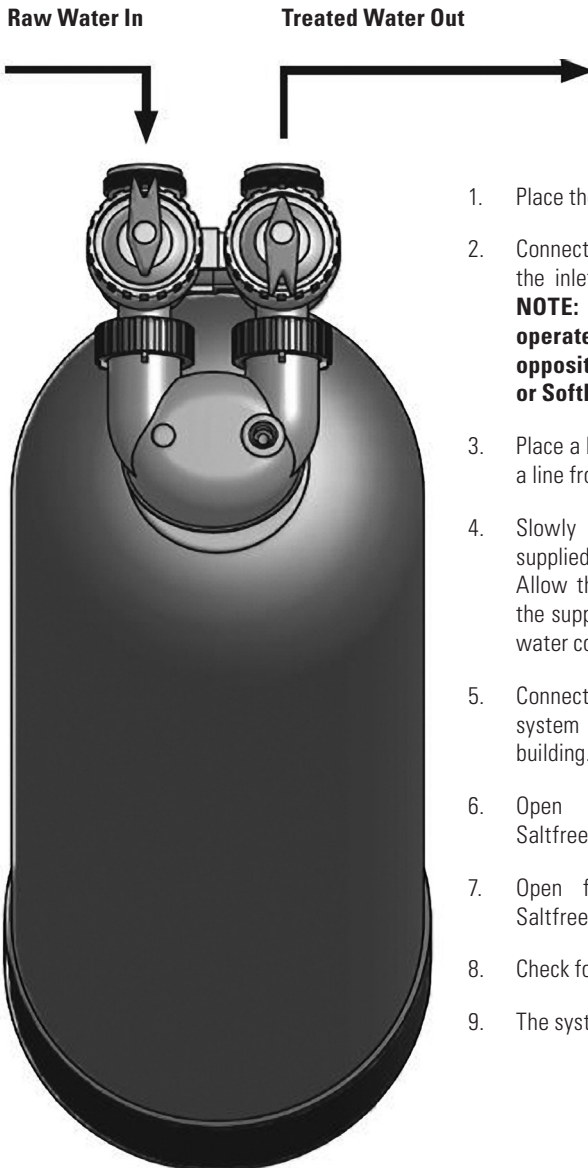
Typical Plumbing Installation



! Important: Brass or plastic yoke assembly (not shown) is required to connect piping to the bypass valve and is available in either NPT or solvent.

Installation and Start Up

Installation Process



1. Place the system in the desired location
2. Connect the cold water supply to the inlet for the SaltfreeMAX™ system.
NOTE: The SaltfreeMAX™ system operates in the UP-flow mode which is opposite of a Water Tech Reionator™ or SoftMAX™.
3. Place a bucket under the outlet port or run a line from the outlet port to a drain.
4. Slowly open the supply valve (user supplied) to the SaltfreeMAX™ system. Allow the tank to fill with water. Close the supply valve when a steady stream of water comes out of the outlet port.
5. Connect the outlet of the SaltfreeMAX™ system to the cold water supply of the building.
6. Open the supply valve to the SaltfreeMAX™ system.
7. Open faucets downstream from the SaltfreeMAX™ system to relieve any air.
8. Check for leaks. Repair as needed.
9. The system is now ready for service

Bypass Valve Operation

The bypass valve is typically used to isolate the control valve from the plumbing system's water pressure in order to perform repairs or maintenance on the system or your home's plumbing.

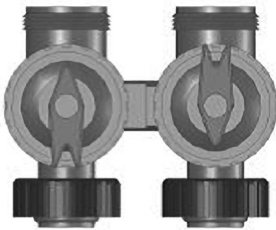
The bypass body and rotors are glass-filled Noryl and the nuts and caps are glass-filled polypropylene. All seals are self-lubricating EPDM to help prevent valve seizing after long periods of non-use. Internal o-rings can easily be replaced if service is required.

The bypass consists of two interchangeable plug valves that are operated independently by red arrow-shaped handles. The handles identify the flow direction of the water. The plug valves enable the bypass valve to operate in four positions.

ATTENTION!!!

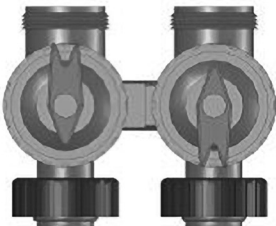
BYPASS VALVE MODIFICATION REQUIRED

Service Position
Down-flow tank

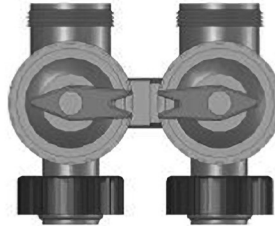


As shipped, the bypass is set-up for down-flow use. The arrow shape of the handles points in the wrong direction for Up-flow use. To convert it to Up-flow use, pull up on the red handles until they come off. Rotate the handle 180° and put it back on the valve stem as pictured below.

Service Position
Up-flow tank



Bypass Position
Up-flow tank



WaterTech Industries MAX Residential Series 5/10 Year Warranty

Applicable to: SALTFREE MAX

WaterTech Industries (WTI) hereby warrants said equipment, only to the original purchaser at the original installation location.

THIS WARRANTY PERIOD BEGINS at the time of initial installation and use. The warranty becomes valid upon registration of the equipment.

10-YEAR WARRANTY ON CONDITIONER TANK — WaterTech Industries will replace or repair (at WTI option) any conditioner tank that becomes unusable because of leakage, corrosion or rupture due to manufacturers defect.

5-YEAR WARRANTY ON CONTROL VALVE — Your water system has been equipped with the highest quality water conditioning components available. If, upon factory inspection, the valve body is found to be defective, WaterTech Industries will furnish repair or replacement (at WTI option) of the valve body. All internal mechanical components are warranted from manufacturers defect for a period of five years from the date of installation.

EXCLUSIONS AND LIMITATION OF LIABILITY — WaterTech Industries' liability for special, incidental, or consequential damages is expressly disclaimed. In no event shall WaterTech Industries' liability exceed the obligation of repairing or replacing any part that becomes defective under valid warranty coverage as described above. Cosmetic damage that does not affect the process functionality of the equipment is not covered. WaterTech Industries makes every effort to ensure that all illustrations and specifications are correct. However, these do not imply a warranty that the product is merchantable or fit for a particular purpose, or that the product may not vary from the illustrations and specifications.

The warranty contained herein is in lieu of all other warranties, expressed or inferred, including any implied warranty of fitness for a particular purpose. Labor and transportation costs incidental to the delivery or replacement of parts other than WTI factory repairs are not covered under this warranty. In the event of a warranty replacement or repair, WTI will cover the cost of shipping the covered components. This warranty expressly excludes any system which has been damaged by accident, fire, flood, Act of God, abuse, neglect, freezing, excessive temperature (below 40° F or above 110° F.), inappropriate pressure (below 20 psi or above 100 psi), misuse, alteration of product in any way by owner or installing company, product identification tampering, misapplication, installation or operation not consistent with WTI instructions and installation outside of applicable plumbing codes and local regulations. Furthermore, this warranty expressly excludes any system which has been out of service for more than 90 days continuously. Fulfillment of the warranty coverage by WTI is contingent on proper execution of the procedures set forth in the WTI Warranty RMA policy. No person or representative is authorized to assume for WaterTech Industries any liability on its behalf, or in its name, except to refer the purchaser to this warranty. This warranty gives you specific legal rights, you may also have other rights which vary from state to state.

WHAT MUST YOU DO TO OBTAIN WARRANTY SERVICE — The warranty registration (via phone or website) must be completed and returned to WaterTech Industries within THIRTY (30) days of installation to validate the Warranty. Repair work should be performed by an authorized WaterTech Dealer. In the event that authorized dealer service is not available, defective components may be returned directly to WaterTech Industries for warranty service. The registered owner must contact WaterTech for return instructions and return the defective component, freight prepaid, with proof-of-purchase, within the applicable warranty period. P: 888-254-8412

Warranty 17-03-010

**PRODUCT MUST BE REGISTERED FOR WARRANTY TO BE IN FORCE
VISIT WWW.WATERTECH.COM**

